

# ANAtech Evolution Pro

High Speed Monochrome Desktop Scanners with Exceptional Accuracy for Scanning Bureaux, AEC, GIS and CAD Drawing Offices

Designed to meet the requirements of the CAD, Engineering and GIS markets, the Evolution Pro provides a productive combination of speed and superior image processing. Easy to use and capable of scanning documents up to 38 inches in width, variable resolutions up to 800 dpi and high accuracy (0.05%)

The Evolution PRO is designed for users who place SPEED at the top of their list – thanks to its unique onboard advanced thresholding the Evolution Pro is capable of scanning up to 6.5 inches per second at 400 dpi.



## FEATURES

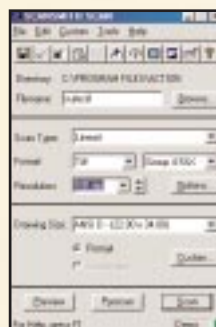
- 2D Intelligent large aperture thresholding technology for excellent scans of ageing or yellowed documents.
- Unique single-roller design and three-point optical mounting system safeguard image data ensuring increased accuracy and near-zero distortion.
- Save data in a variety of industry standard file formats including TIFF, CALS and others. Formats include 8-bit greyscale for 256 levels of grey and bi-level line art formats.
- Easy to use desktop model capable of handling documents up to 40 inches with active scan width of 38 inches, 97 cm.
- Operating at up to 6.5 inches per second the Evolution Pro features onboard Advanced thresholding technology for faster scanning throughput.
- Easy to use scanning software ensures professional results – first time and every time.
- Operates on Windows 95/98, NT, XP, 2000
- Optional floor stand and SCSI Interface Kit.

## Included Software

### ScanSmith Productivity Suite 2003

#### ScanSmith Scan

Professional scanner user interface with real time scanning display window for area of interest selection and prescan. Comprehensive controls including four types of thresholding, multiple paper load options and the ability to control the scanning process from the scanner itself.

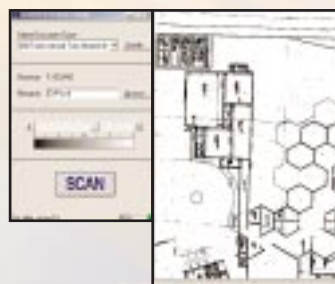


#### Supported File Formats

TIFF  
JPG  
BMP  
CAL  
PCX  
RLC  
RLE  
CIT  
TG4  
HRF  
IGS  
COT  
GRY  
RST

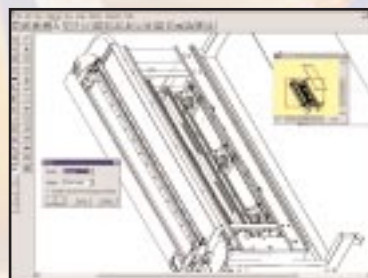
#### Easy Scan

Make your own presets within SCAN and use them in this very simple user interface. Simply enter the file name, set darkness level and scan.



#### Preditor

A professional raster editor specifically designed for high speed viewing and editing of large colour, greyscale and monochrome images. Optimised for easy to use raster editing, image clean up and drawing functions including extensive thresholding, deskew, despeckle, hole filling and many more.



Preditor Software



OUR BUSINESS  
IS YOUR IMAGE

## Evolution Pro - Technical Specifications

Resolution	Variable 1-800 dpi
Scanning rates* for A0 Or E size @ 400 dpi**	6.5", 16.5cm/sec
Active scan area	38", 96.5cm width x unlimited length
Max document width	40", 101.6cm
Accuracy	+/- 0.05% plus a digitising rounding error of +/- 1 pixel
Max document thickness	0.1", 2.5mm
Document type	Opaque or transparent
Imaging technology	Straight line image sensor array
Illumination & optics	Reflective scanning utilising cold cathode fluorescent light source
Output modes	256 level greyscale Black and White Multiple industry standard file formats
Thresholding	2D Large Aperture Adaptive Thresholding
Interface	SCSI
Scanner dimensions	48" x 17" x 7.34", 122cm x 43cm x 19cm
Weight	38.5Kg, 85lbs
Operating environment	15-32C, 59-90F, 15-90% RH, non-condensing
Power requirement	100 - 250 VAC autosensing, 47 - 63 Hz, 250 VA

### Evolution Pro Scanner Includes

ScanSmith Productivity Suite, Preditor, User documentation.

### Accessories

Floor Stand, SCSI Interface Kit

### Recommended System Requirements

Pentium 1 GHz processor,  
128 MB RAM,  
10Gb Free space minimum  
24-bit Display card  
Windows 2000 / ME / XP

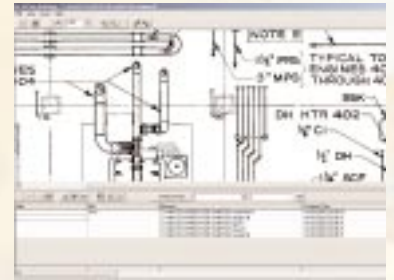
\*The scan rate is proportional across the full range of resolutions supported by the scanner. However, actual scan times will depend on the host system performance. Contact your local supplier for advice on the optimum system requirements for your application.

\*\*using Turbo mode

## Software Options

### ACTION Indexing Software

Making the capture of index data from scanned engineering drawings simple. Automatically displaying the title block so drawing information can be entered into the data window. Project information is stored in the common Microsoft Access 2000 format.



Contact your Action Imaging Solutions Dealer for pricing information.



info@colortrac.com www.colortrac.com

UK Office • Kings Hall • St Ives Business Park • St Ives • Huntingdon • Cambridgeshire • PE27 4WY  
T +44 (0)1480 464618 • F +44 (0)1480 464620

US Office • 17301 West Colfax Avenue • Suite 165 • Golden • Colorado • 80401-4891 • USA  
T +1 (303) 973 6722 • F +1 (303) 973 7092